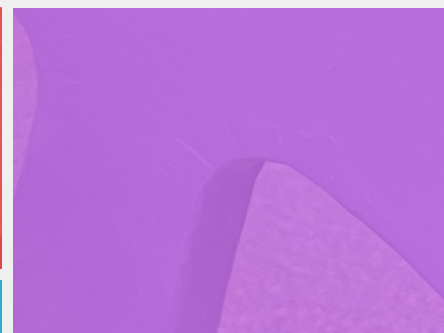
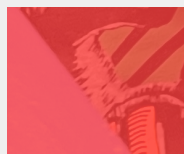
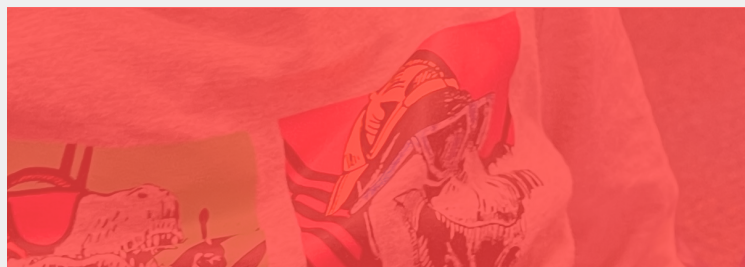
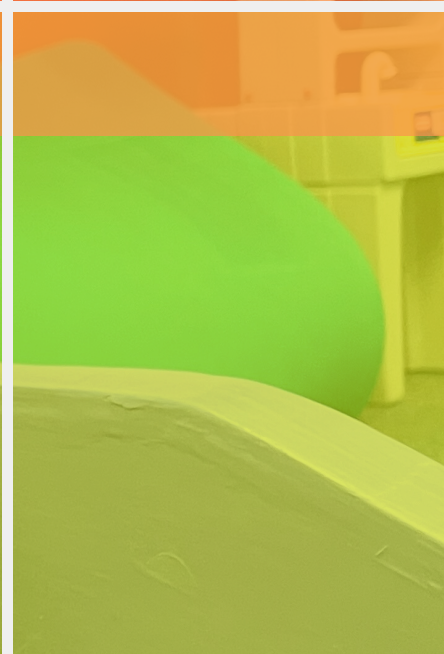


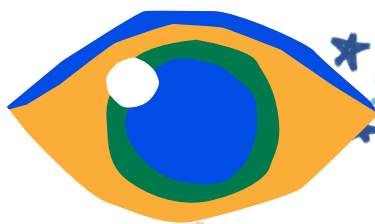
Annual Report

24



All In
4 Inclusion

Reflection Vision



Mom...

Can we go more places now?

-Rosie

Rosie is not defined by her special needs. Her epilepsy and cerebral palsy are merely chapters in a much larger storybook. Rosie is funny, vibrant, and adventurous. She also happens to be a huge Peppa Pig fan! So when Made4Me fabricated custom steps to help Rosie get in and out of her family vehicle, Peppa Pig adorned the sides. For her caretakers, the steps are a very helpful tool to make life a little easier. For Rosie, the steps symbolize much more. The purple and pink staircase represents a path toward independence. Rosie had an “I Can” moment. Suddenly the world felt accessible, and when she turned and asked her mom if they could go more places now, the answer was simply, “yes, we can”.

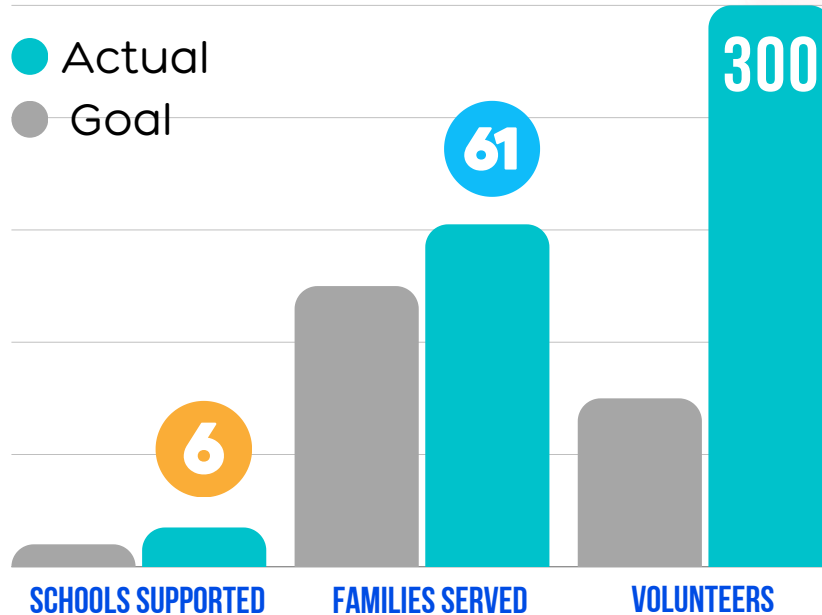
In 2024, Made4Me created over **180 adaptations** to help enhance the lives of **families** like Rosie's. We supported 6 schools to create more inclusive learning environments, implemented a service learning program with over 35 special needs individuals volunteering in our shop weekly, in service to their community, and our community of volunteers grew to over 300 people. Without our volunteers and our supporters, this work is not possible. So much good is happening, and as we look ahead to 2025, the evolution of our service is clear. **In 2025, Made4Me is all in 4 inclusion!** What does being ‘all in’ look like? We will expand our work in community spaces, ensuring that adaptive devices are accessible to our families. Because until everyone feels a sense of belonging in our community, inclusion does not exist. Thank you for being a part of everything we have achieved, and the impact we will make going forward, together.

M4M Team



Community Impact 2024

● Actual
● Goal



We exceeded our primary goals while fabricating over 180 items in 2024

7 YEARS OF SERVICE

FAMILIES SERVED



161 Served Since 2017

161 Families served and over 1,000 individuals supported through our community work

300 VOLUNTEERS

“...Knowing that you made someone's life a little easier is the most rewarding feeling.”

-Joe Griffin



All In 4 *2025* Inclusion



What does 'All In 4 Inclusion' look like? M4M is launching a new collective impact project called

SPARC, Specialized Program for Adaptive Recreation in Communities. In 2025, By

establishing intentional partnerships with mission aligned community organizations, M4M will provide adaptive equipment to local community centers while also coordinating therapist led activities designed for individuals with special needs. Our 2025 impact goals:



Innovation Specialist Michael Jernigan
with his Bocci Ball Ramp

Studies show that a strong sense of belonging in children directly correlates to increased self-esteem and self-efficacy.

3

6

Community
Spaces
Supported

50

Adaptive
Recreation
Devices

75

People
served

SPARC



Serve 60 individual families
with customized adaptations



Support 6 community
spaces with SPARC and
serve 75 individuals



Serve 35 individuals with special
needs through our service learning
skill development program

**MORE
GOALS!**



Our 2025 Pledge



Do More, For More!

- Increase families served
- Increase independence for our Triangle families
- Make our communities more inclusive
- We are all in... are you?



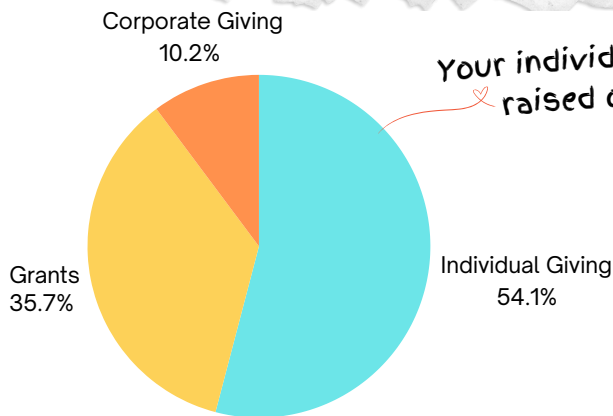
That's our pledge, but what's yours?!

Donate today and ensure individuals with special needs have access to equitable resources.



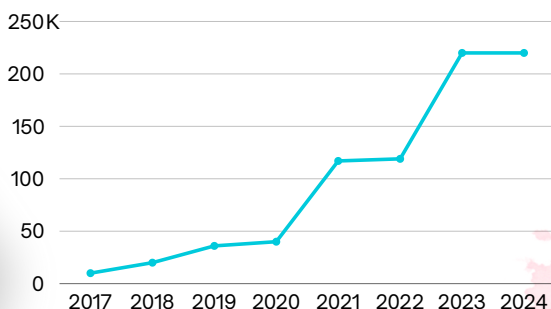
4

FY 24 Support: It Took A Village



Thank you to our corporate and community partners!

Sustainable Growth



Altec	Spark	Crossroads Fellowship Church
Cisco	DJ Damu	Duplin County
The American Board of Pediatrics	Abil-Ot	Durham Cerebral Palsy Foundation
Jarfish	NC State	Granville County
Tommy Tacos	Community Workforce Solutions	Granville United Way
Truist	EATON	Hoke County
Industry	Vance Charter	John William Pope Foundation
Edge Printed Products	Mission Triangle	Johnston County
CAHEC	Apex Sunrise Rotary	Louise R. Lester Foundation
Towne Bank	North Raleigh Rotary	Publix
Sherwin-Williams	Bags and Brews	Roberts-Miller Children's Fund
Wake Electric	Good Barrels	Truist Foundation
Foundation	Cameron Foundation	
Walmart/Sam's Club	Carteret	
Warren County	Christ Our Hope Church	
	Craven County	